

**Blast Chillers-Freezers CW  
Blast Chiller-Freezer  
Crosswise 6 1/1 - 12kg**

ITEM # \_\_\_\_\_

MODEL # \_\_\_\_\_

NAME # \_\_\_\_\_

SIS # \_\_\_\_\_

AIA # \_\_\_\_\_



**Blast Chillers-Freezers CW**

**Blast Chiller-Freezer Crosswise 6 1/1 - 12kg**

110781 (BCF7A)

Blast chiller/freezer for 1/1 GN containers, 12.5/7 kg, from +90 to -18°C

**Short Form Specification**

**Item No.** \_\_\_\_\_

For 5 GN1/1 or 600x400 mm trays. Load capacity: chilling 12,5 kg; freezing 7 kg (UK guidelines). External and internal top, front and side panels in 304 AISI stainless steel. Internal rounded corners and drain. Right hinged, reversible full door. Built-in refrigeration unit. Electronic control, 5 standard and 10 programmable cycles. Automatic and Manual defrost. Blast chilling real residual time estimation (A.R.T.E.). Turbo cooling function. Specific cycles for ice cream. Evaporator with antirust protection. Digital temperature and time display. HACCP and Service alarms with data logging. Operating air temperature: +90 -41°C. For ambient temperatures up to 32°C. Cyclopentane insulation (HCFC, CFC and HFC free). R404a refrigerant gas (HCFC and CFC free).

**Main Features**

- Blast Chilling cycle: 12,5 kg from 90°C up to 3°C in less than 90 minutes.
- Blast Freezing cycle: 7 kg from 90°C up to -18°C in less than 240 min.
- Soft Chilling (air temperature 0°C).
- Hard Chilling (air temperature -20°C).
- Turbo cooling: chiller works continuously at the desired temperature; ideal for continuous production.
- Control unit provides two large displays to read out: time, core temperature, cycle countdown, alarms, service information.
- All information related to the different operating models are recorded: date, time, cycle, core temperature, holding temperature, HACCP accordance.
- Two customizable cycles (P1 & P2) for each operating mode, allowing to set the time and air temperature. These programs can be converted into ice-cream specialized cycles (shape maintainance and holding).
- Single sensor core probe as standard.
- Probe-driven cycles feature ARTE (Algorithm for Remaining Time Estimation) to make planning the activities easier.
- Performance guaranteed at ambient temperatures of +32°C.
- Holding at +3 °C for chilling or -18 °C for freezing, automatically activated at the end of each cycle, to save energy and maintain the target temperature (manual activation is also possible).
- Easy-to-use, electronic control panel. Fully programmable.
- R404A gas in refrigeration circuit.
- Will freeze product from 90 °C to -18 °C or below in less than 240 minutes.
- Holding at 3 °C for chilling, automatically activated at the end of each cycle, to save energy and maintain the target temperature (manual activation is also possible).

**Construction**

- High density polyurethane insulation, 60 mm tickness, HCFC free.
- Magnetic, easy-to-remove heated gaskets.
- 304 AISI stainless steel construction throughout.
- Seamless hygienic inner cell with all rounded corners for easy cleaning.
- Swing hinged front panel for easy service access to main components.
- Ventilator swinging hinged panel for access to the evaporator for cleaning.
- No water connections required.
- Waste water can be plumbed into drain, but can also be collected in an optional waste container.

**Included Accessories**

- 1 of 1 extra single-sensor probe for blast chiller and blast chiller&freezers PNC 880213

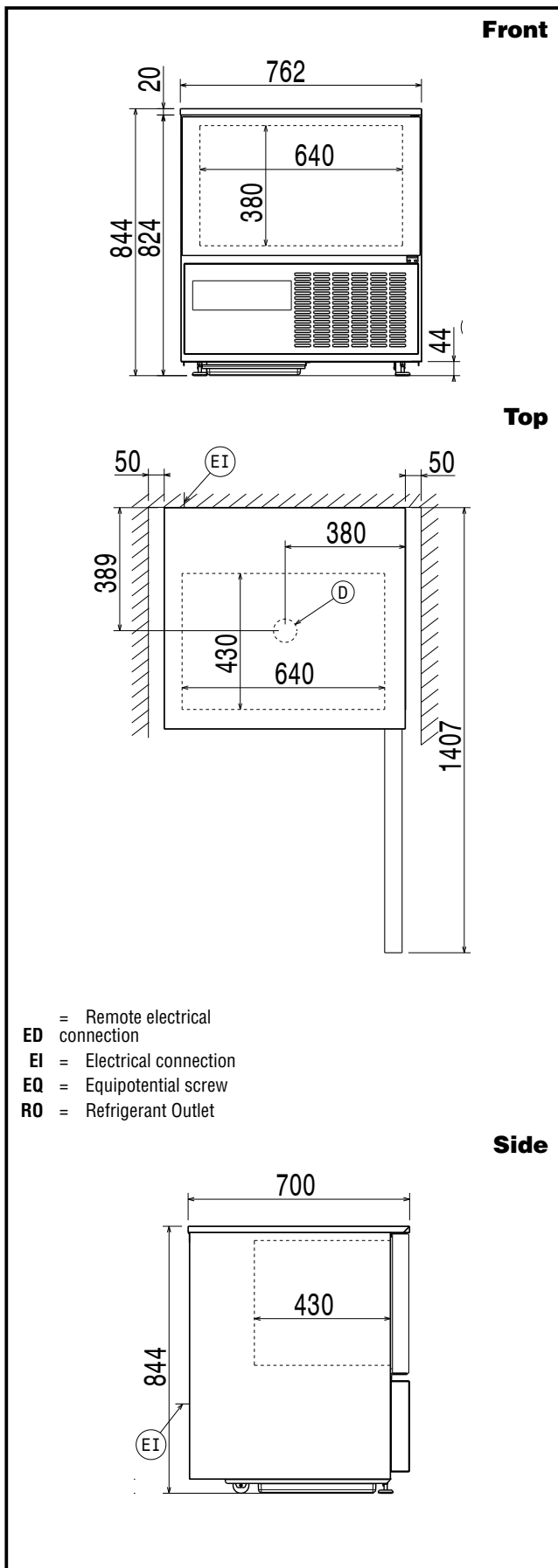
**Optional Accessories**

- 3-sensor probe for blat chiller and blast chiller/freezers PNC 880212

APPROVAL: \_\_\_\_\_

- 1 extra single-sensor probe for blast chiller PNC 880213   
and blast chiller&freezers
- 4 feet for 10-kg blast chiller and chiller/  
freezer PNC 880338
- Rilsan grid, 600x400 mm PNC 880864
- Plastic coated grid for refrigerated tables PNC 881061
- Printer for HACCP basic version (for  
cabinets and counters with electronic  
control) PNC 881532
- Pair of 1/1 GN grids in 304 AISI PNC 921101





**Electric**

Supply voltage:  
110781 (BCF7A) 230 V/1N ph/50 Hz  
Electrical power: 0.729 kW  
Circuit breaker required

**Installation:**

Clearance: 5 cm on sides and back.  
Please see and follow detailed installation instructions provided with the unit

**Capacity:**

GN: 6 - 1/1 containers  
Max load capacity: 7 kg

**Key Information:**

External dimensions, Height: 844 mm  
External dimensions, Width: 762 mm  
External dimensions, Depth: 700 mm  
Net weight: 95 kg  
Shipping weight: 100 kg  
Shipping volume: 0.69 m<sup>3</sup>  
Chilling-Freezing Productivity per cycle (NF Regulations): 7.2 kg - 5.4 kg  
Chilling-Freezing Productivity per cycle (UK Guidelines): 12.5 kg - 7.2 kg

**Refrigeration Data**

Control type: Electronic  
Refrigerant type: R404a  
Refrigeration power: 234 W  
Refrigeration power at evaporation temperature: -23.3 °C  
Refrigerant weight: 380 g

- ED = Remote electrical connection
- EI = Electrical connection
- EQ = Equipotential screw
- RO = Refrigerant Outlet